

How smart is your surveillance system?

IQ Series - Driver Match

Licence plate recognition with driver identification

IQ Driver-Match is a unique product offering with both Licence Plate and Driver Identification. This is particularly useful in car parks to prevent the theft of vehicles.

The vehicle's number plate is recognized and the driver is identified using iOmniscient's sophisticated Facial Recognition system. The system matches the License Plate with the driver and ensures that only he or one of his predefined nominees is driving the vehicle.

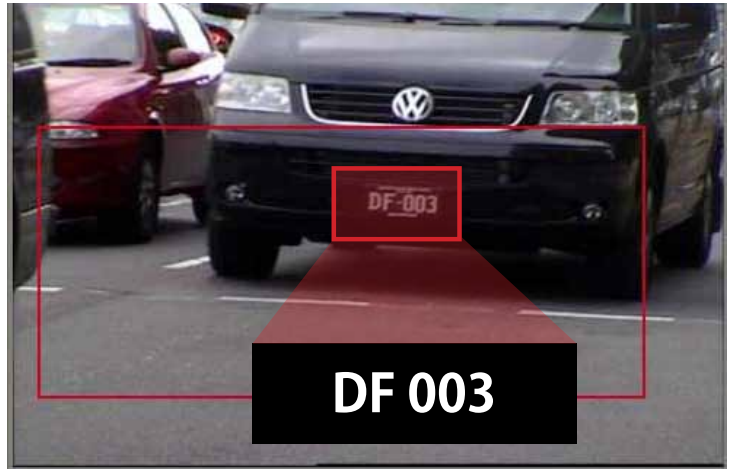
The system is unique in that the facial recognition does not require a controlled environment. It can operate with low resolution cameras and variable facial angles.

What makes IQ-Driver-Match different?

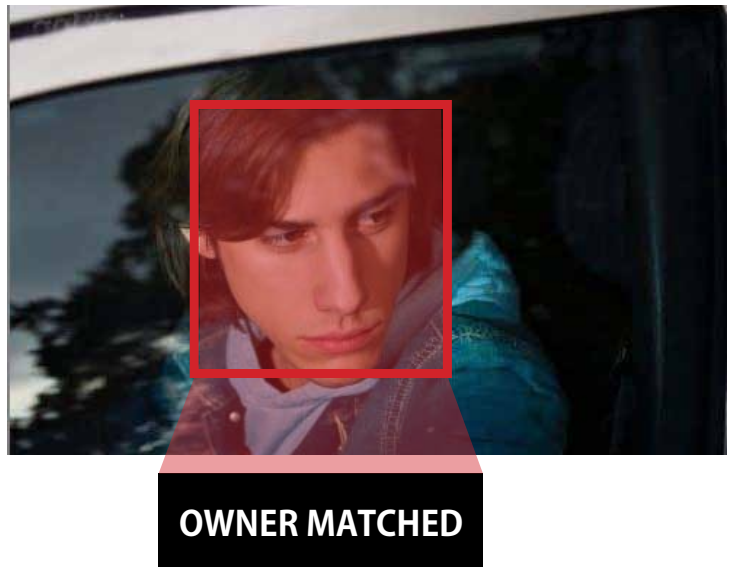
- Operates in uncontrolled environments
- Recognises the driver's faces from variable facial angles
- The Facial Recognition operates with low resolution cameras at a distance (requires only 22 pixels between the eyes)
- Operates in conjunction with iOmniscient's highly accurate and multi-lingual License Plate Recognition system
- Fully integrated with IQ series products

Applications

- Driver identification to verify vehicle ownership in secure car parks
- Identifying personnel identity for access control verification
- Entry exit verification of people in secured locations



Licence plate identified



See Through the Crowd

